

P550 Switch

IPTV set-top box

Instructions for use



Important: Read carefully before use
and retain for future reference.

 **Dolby** Audio

HDMI®

Table of contents

- 1 Safety information..... 3
 - 1.1 Signs and symbols used..... 3
 - 1.2 General safety information..... 3
- 2 Intended use..... 5
- 3 Connections..... 5
- 4 Getting started..... 6
 - 4.1 Connection sequence for power supply with PoE..... 6
 - 4.2 Connection sequence for power supply with external power supply unit..... 7
 - 4.3 Software updates..... 7
- 5 Cleaning..... 8
- 6 Returning used devices..... 8
- 7 Troubleshooting..... 9
- 8 Legal notes..... 10
 - 8.1 Registered trademarks and notes on licences..... 10
 - 8.2 Open Source Software..... 10
- 9 Declaration of conformity..... 10
- 10 Technical specifications..... 11
- 11 Optional accessories..... 12

1 Safety information

Please read the following information carefully before you start using the product. This helps prevent misuse and resulting personal injury, faults and/or damage to the hardware and software.

Save these instructions for use in case of future questions and pass them on to future users.

1.1 Signs and symbols used

Please make yourself familiar with the signs and symbols used in this instructions for use.



WARNING

Indicates a potential risk. If not avoided, it can result in serious injury or death.

ATTENTION

Indicates a potentially damaging situation. If not avoided, the component or an object in its vicinity may be damaged.



Additional information

1.2 General safety information

- The set-top box is for indoor use only.
- Regularly check the cable of the power supply unit for damage. In case of damage, disconnect the power supply unit from the mains network and contact your provider.
- Always replace damaged cables with equivalent cables.
- Only connect the power supply unit of the set-top box to the specified mains voltage.
- The set-top box has to be connected to an outlet that is easily accessible. You must be able to disconnect the set-top box from the mains network at any time.
- Maintain the following minimum clearances around the set-top box: 10 cm above, 5 cm behind, 2 cm on the sides.
- Never put the set-top box into a cabinet or shelf with insufficient ventilation.
- Do not let the set-top box fall on the floor. Do not install the set-top box more than 2 metres above the floor.

- Do not let the devices fall on the floor. Do not install the set-top box more than 2 metres above the floor.
- Do not try to repair the set-top box yourself. Doing so could put electrical safety at risk. If the set-top box was dropped or if water got into the unit, disconnect the set-top box from the mains network immediately and contact your provider.
- Protect the set-top box against moisture and dripping or splashing water.
- Do not place objects filled with liquids, such as a vase, on top of the set-top box.
- Only operate the set-top box in a dry, dust-free environment.
- Protect the set-top box and the power supply unit against direct sunlight, open flames and other heat sources, such as radiators.
- Do not place objects such as other devices or candles on top of the set-top box.
- In case of an extended absence and during thunder storms, disconnect the power supply unit of the set-top box from the mains network.
- Also disconnect all devices connected to the set-top box.
- Keep the set-top box out of reach of children.



Heating of the set-top box

- The heating of the set-top box is in the permissible range. However, sensitive furniture finishes may become discoloured over time due to ongoing heat exposure.
- The base can cause discolouration of furniture finishes. Place the set-top box on a suitable underlay if needed.

2 Intended use

The set-top box is intended to receive TV and radio signals in conjunction with IPTV systems. Any other use constitutes improper use. The manufacturer assumes no liability for errors, faults or damage caused by improper use. This includes the following in particular:

- Improper connection and operation
- Use of unsuitable data media or accessories
- Failure to comply with the installation and storage conditions
- Infection of software components with computer viruses
- Modification of the hardware and software

3 Connections

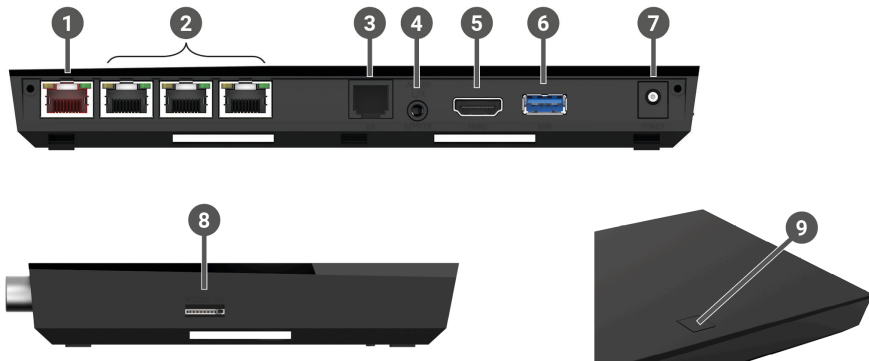


Figure 1: Connections

- | | |
|---|--|
| 1 LAN with PoE | 6 USB ²⁾ |
| 2 LAN | 7 Power |
| 3 RJ12 (RS232 and IR Input) | 8 Micro SD card slot ²⁾ |
| 4 S/PDIF optical / 3.5 mm jack ¹⁾ | 9 On/off, remote control pairing (Bluetooth mode) ³⁾ |
| 5 HDMI® output | |

¹⁾ Combined connection for 3.5 mm jack (e.g. for headphones) and optical TOSLink (S/PDIF)

²⁾ For service use only, or as instructed by your provider. The connection of media can influence the serviceability of the set-top box.

³⁾ Depending on the configuration of the IPTV system, the set-top box and the operating mode of the remote control.

4 Getting started



WARNING

Danger due to electrical voltage and resulting fire hazard

→ The cables must not be kinked or trapped.

ATTENTION

Risk of malfunctions or defects of the device

Incorrect installation

→ Connect the cables to the set-top box in the correct order. Make sure that the network cable engages audibly.

Interrupting the power supply during installation

→ Never disconnect the power to the set-top box during installation or when updating the software. This avoids possible damage.

4.1 Connection sequence for power supply with PoE

1. Connect the set-top box as shown in Figure 2 on page 6. Observe the correct connection sequence:
 - 1 HDMI® cable
 - 2 Network cable
2. Turn on your TV set.

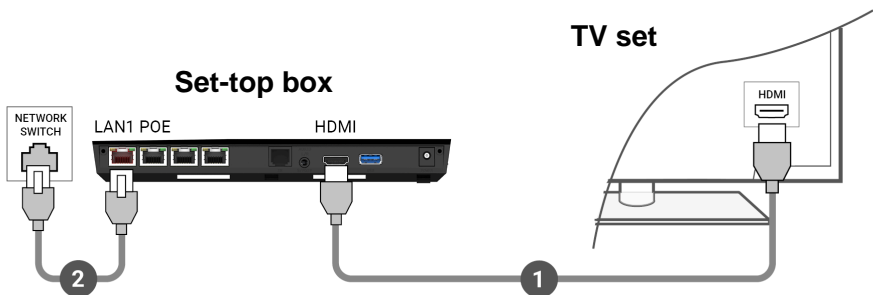


Figure 2: Cable connections - PoE

4.2 Connection sequence for power supply with external power supply unit

1. Connect the set-top box as shown in Figure 3 on page 7. Observe the correct connection sequence:
 - 1 HDMI® cable
 - 2 Network cable
 - 3 Power supply
2. Turn on your TV set.

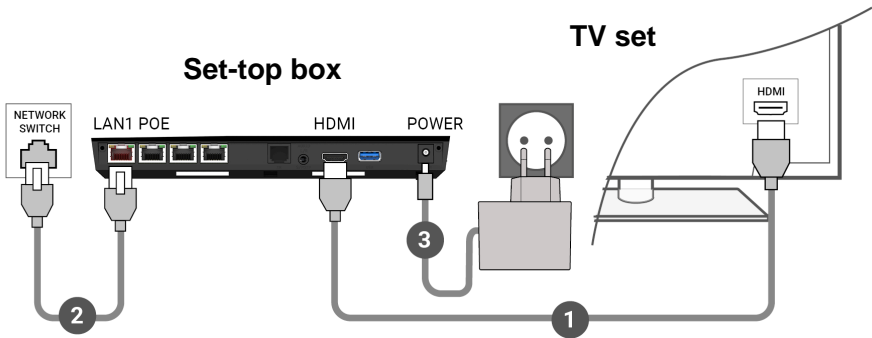


Figure 3: Cable connections - external power supply

4.3 Software updates

Software updates are installed automatically. If a software update is already available when you first start using the product, you have to install the software update first. To do so, follow the instructions on the TV set.

5 Cleaning



WARNING

Danger due to electrical voltage and resulting fire hazard

- Disconnect the set-top box from the mains power supply before cleaning.
 - Clean with a dry, lint-free cloth.
 - Only clean the surface of the device.
 - Never open the device.
 - Do not use cleaning agents that contain solvents.
-

6 Returning used devices

Applicable in the European Union and other European states with systems for the separate collection of recyclable materials.



Disposing of electronic equipment in household waste is not permitted. At the end of its life, return the device to the appropriate public collection centre or the point of sale. Details are governed by the respective national laws. The symbol on the product, the instructions for use or the packaging points out these provisions.

Reusing materials and recycling used devices makes an important contribution to protecting our environment.

7 Troubleshooting

Problem	Possible cause	Remedy
Support info 30 – 34 is shown for more than 3 minutes	Technical error while establishing the network connection.	Disconnect the set-top box from the mains network for about 5 minutes. Contact your provider if necessary.
Support info 40 – 85	Technical error during a software update.	Disconnect the set-top box from the mains network for about 5 minutes. Contact your provider if necessary.
Support info 65	No connection to the NTP server.	Check the network settings of the router. Contact your provider if necessary.
The set-top box does not respond to the remote control	The Bluetooth receiver on the set-top box has crashed.	Disconnect the set-top box from the mains network for about 5 minutes. Contact your provider if necessary.
No picture	No mains connection.	Check that the power supply unit and cable are properly connected.
	Defective cable connection.	Check cable connections to make sure they are tight.
	Incorrect HDMI source.	Configure the HDMI source of the TV set on the set-top box.
Poor picture quality	Incompatible HDMI cable.	Only use the supplied high-speed HDMI® cable.

Table 1: Troubleshooting

In case of further issues, contact your network operator.

8 Legal notes

8.1 Registered trademarks and notes on licences



Dolby, Dolby Audio and the double-D symbol are registered trademarks of Dolby Laboratories Licensing Corporation.



The terms HDMI and HDMI High-Definition Multimedia Interface, and the HDMI Logo are trademarks or registered trademarks of HDMI Licensing Administrator, Inc. in the United States and other countries.

Customer notes on MPEG LA licences are available on www.ocilion.com/lizenzhinweise

8.2 Open Source Software

The product also contains open source software. This software was developed by a third party and is subject to copyright. You are entitled to use the open source software in line with the applicable licence conditions.

For details of the licence conditions and further information, see www.ocilion.com/opensource

9 Declaration of conformity

The manufacturer hereby declares that the CE marking has been affixed to this device in accordance with the essential requirements and other relevant provisions of the following directives:

- 2014/53/EU - RED Directive
- 2009/125/EG - Ecodesign Directive
- 2011/65/EU - RoHS Directive

The full text of the EU Declaration of Conformity is available at www.ocilion.com/ce

10 Technical specifications

Item information	
Item no.	STB-P550/0
Colour	Black
Weight	318 g
Dimensions (W x H x D)	210 x 130 x 25 mm
Environmental conditions	
Temperature	+5 - +40 °C
Humidity	20 - 80 %
Power / energy consumption	
Deep standby	0,3 W
Standby	3,2 W
Normal operation	3,9 W
Supported formats and codecs	
Audio codecs	ac3, wma2, mp3, pcm, aac, mp2, aiff, aif, wav
Video codecs	MPEG1, MPEG2, MPEG4, avc, H.263, H.264, H.265, xvid, m-jpeg
Video resolutions	576i, 576p, 720p, 1080i, 1080p, 2160p
External connections	
<ul style="list-style-type: none">■ 3 x Ethernet (RJ45)■ 1 x Ethernet (RJ45) + PoE (PD)■ 1 x HDMI® output■ 1 x USB 3.0■ 1 x S/PDIF optical / 3,5 mm jack (stereo)■ 1 x RS232 and IR input (RJ12)■ 1 x Micro SD card slot	
Interfaces	
Bluetooth	5.0
Infrared	36 KHz (RC-5:SAT2)
Wifi	IEEE 802.11 b/g/n/ac (2,4 / 5 GHz)
Wifi security	WPA / WPA2 PSK
Copy protection	
DRM	Verimatrix Viewright
HDMI®	HDCP 2.2

Table 2: Technical specifications of the set-top box

11 Optional accessories

Accessories such as installation materials and the remote control are supplied according to the application (see "Optional accessories" on page 12). Consult your sales partner for detailed information.

Designation	Description/package contents	Order no.
Installation accessories		
Duct cover	Duct cover (2-piece) including installation materials	STB-P491/0
Installation set 220 mm	Mounting rail 220 mm including installation materials	STB-T292-220
Installation set 320 mm	Mounting rail 320 mm including installation materials	STB-T292-320
Installation set 420 mm	Mounting rail 420 mm including installation materials	STB-T292-420
Installation set 600 mm	Mounting rail 600 mm including installation materials	STB-T292-600
Connecting cable		
High speed HDMI® Cable	High speed HDMI® Cable 150 cm, black	STB-P494-HDMI-0150/0
Network cable	Network cable 300 cm, black	STB-P494-ETH-0150/0
Remote controls		
Wipeable remote control, black	Infrared remote control, wipeable, with 2 x AA alkaline batteries, colour: black	STB-RC-R200-200
Bluetooth remote control	Bluetooth/infrared remote control with 2 x AAA alkaline batteries, colour: black	STB-RC-T4HU2020
Power supply		
Power supply	Power supply unit for the set-top box (12 V / 1 A)	STB-P490A/0

Table 3: Optional accessories

Notes

[illegible]

Notes

[illegible]

Notes

[illegible]

Version 2.6
Date 10-08-2023

Manufacturer:
Ocilion IPTV Technologies GmbH
Schärdinger Straße 35 • 4910 Ried im Innkreis / AUSTRIA
Telephone: +43 7752 2144-0 • Internet: www.ocilion.com



In the course of product improvements, we reserve the right to make technical and visual changes to the device described in these instructions for use. The current instructions for use are available on

www.ocilion.com/gebrauchsanleitungen.

Changes and printing errors excepted.